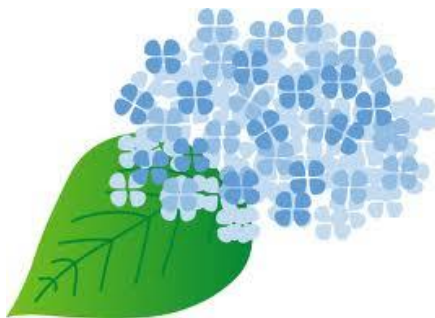


# Wanna go see Hydrangeas?



The “*Ebine* Garden” will be open for hydrangea season!

**Open from June 4<sup>th</sup> (Sat) – June 19<sup>th</sup> (Sun)**

**9:00am-4:00pm (no entry after 3:30pm)**

**Admission: FREE**

**Access:** From the Machida bus center (underneath Odakyu), take a bus bound for Nozuta shako via Honmachida, or one that is bound for Tsurukawa Station from the #21 bus stand in front of the POP building. Disembark at the Yakushi-ike stop, turn around and walk back the way you came for about 5 minutes. You can see a wooden gate and stairs at the foot of a little hill on the opposite side of the road. That is the Ebine garden.

